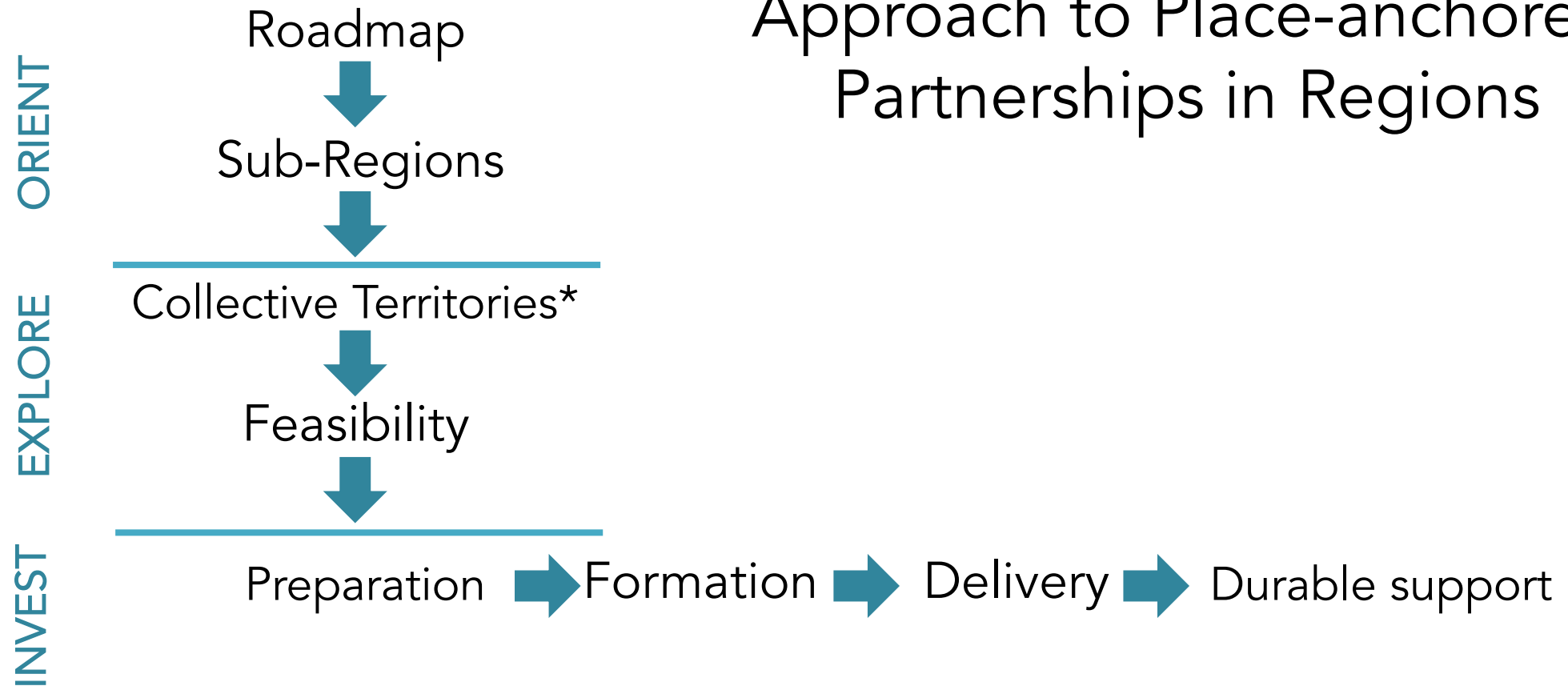


Place-anchored Partnerships Tracking Tool

Approach to Place-anchored Partnerships in Regions



***Collective territories** - The lands and waters that Indigenous Peoples and local communities occupy and use collectively. Specifically, it is a distinct geographic, cultural and ecological space that is common to a specific Indigenous People, group of peoples or local community. Tenure is held collectively – either legally or de facto – and resource definition and use, as well as cultural practice, is governed within a common property context.

Definition of approach terms

feasibility = decision to invest or not

preparation = creation of the conditions for Indigenous Peoples to advance collectively in the management territory, culture and wellbeing

formation = definition of clear co-responsibilities that are agreed by all involved

delivery = implementation of plans

durable support = ongoing delivery of commitments with evidence of impact and with long term financing in place

Description of Place-anchored Partnerships Tracking & Monitoring Tool

1. **Map** = visual location of territory with basic description of peoples and place
2. **Impact assessment** = summary analysis of potential impact of Nia Tero partnership

$$\text{Potential Impact} = \frac{\text{Willingness} \times \text{Relative Value} \times \text{Additionality} \times \text{Ability}}{\text{Risk} \times \text{Relative Cost}}$$

3. **Approach Tracking tool** = illustration of progress based on Nia Tero's approach
4. **Impact Monitoring dashboard** = illustration of measures for thriving peoples | thriving places

Definition Potential Impact terms

$$\text{Potential Impact} = \frac{\text{Willingness} \times \text{Relative Value} \times \text{Additionality} \times \text{Ability}}{\text{Risk} \times \text{Relative Cost}}$$

Willingness = guardianship commitment of potential Indigenous partner

Ability = capability of Indigenous partner to secure guardianship

Relative Value = Earth systems value of Indigenous territory relative to other territories in a region

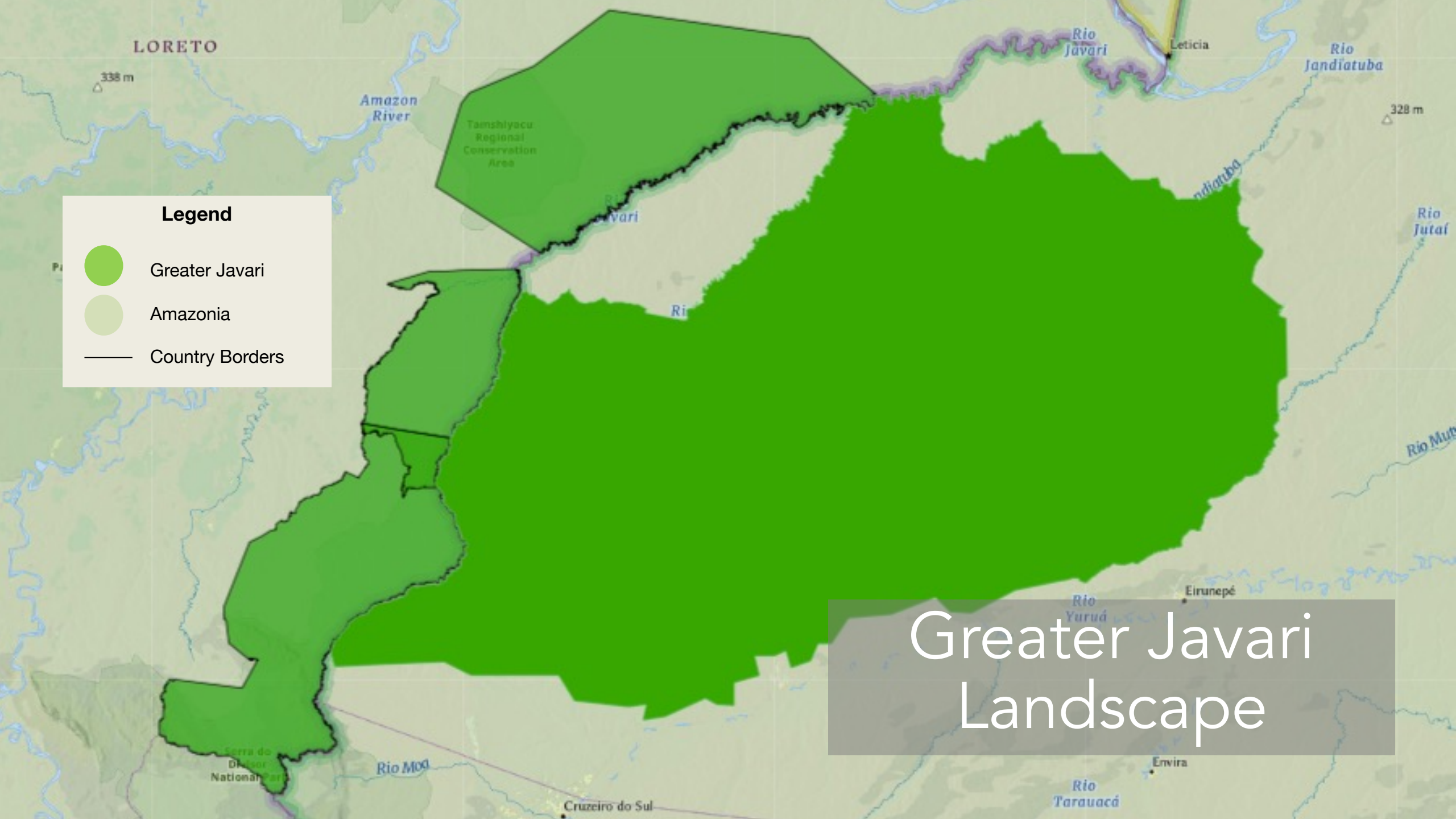
Additionality = Nia Tero's unique capability to mitigate risk, address threats (e.g. mining) and enhance ability of Indigenous partner

Risk = factors that threaten guardianship not directly under the control of Indigenous partners or Nia Tero (e.g. war, disease, climate, hostile policies)

Relative Cost = cost of partnership activities and supporting initiatives relative to community and territory size



Greater Javari Example



Legend

- Greater Javari
- Amazonia
- Country Borders

Greater Javari Landscape

Strategic fit: Brazil, Greater Javari, Peoples in Voluntary Isolation

of people: 6000

Indigenous Peoples: 7 contacted Indigenous Peoples, ~16 groups of Indigenous Peoples in isolation

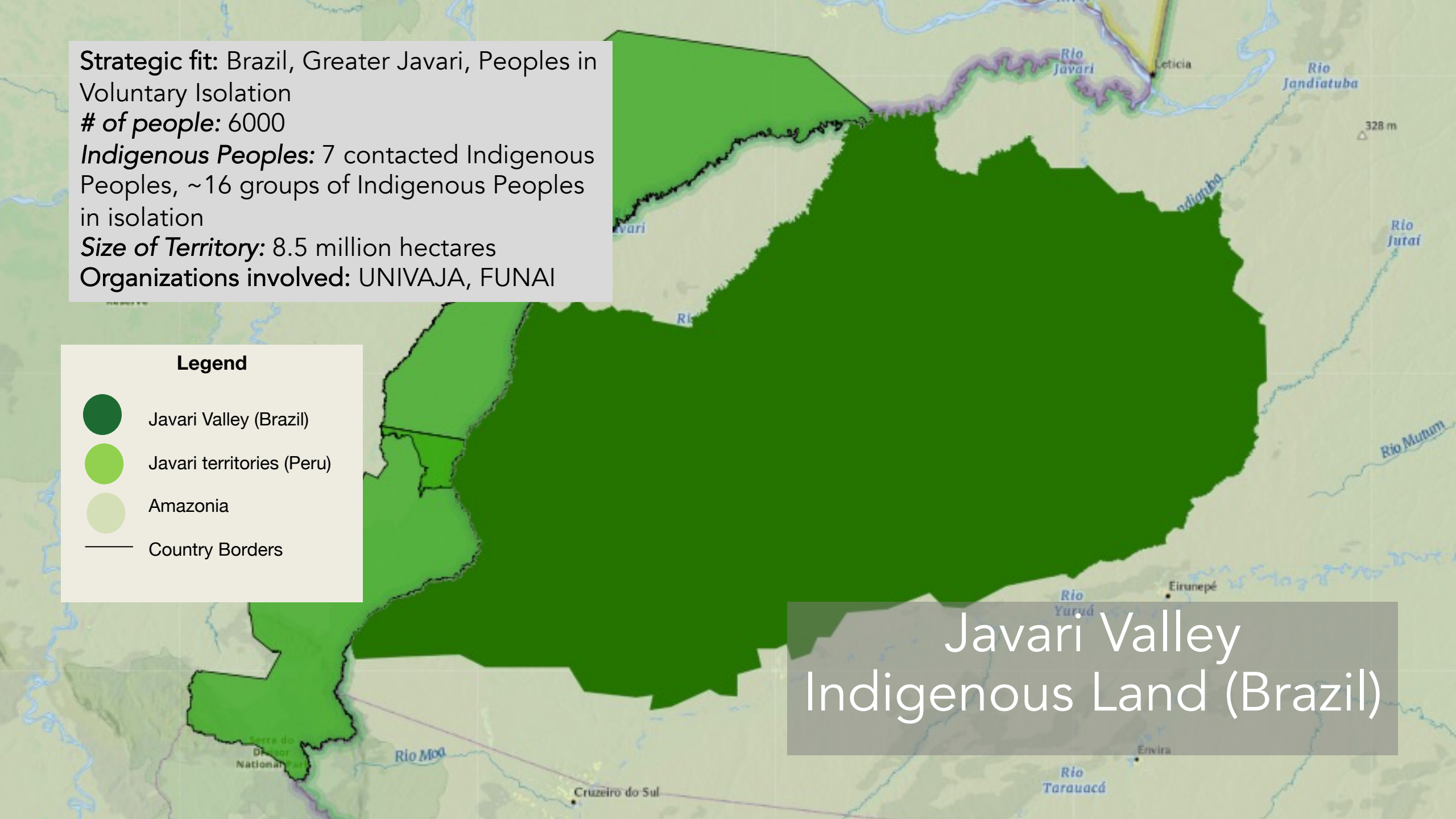
Size of Territory: 8.5 million hectares

Organizations involved: UNIVAJA, FUNAI

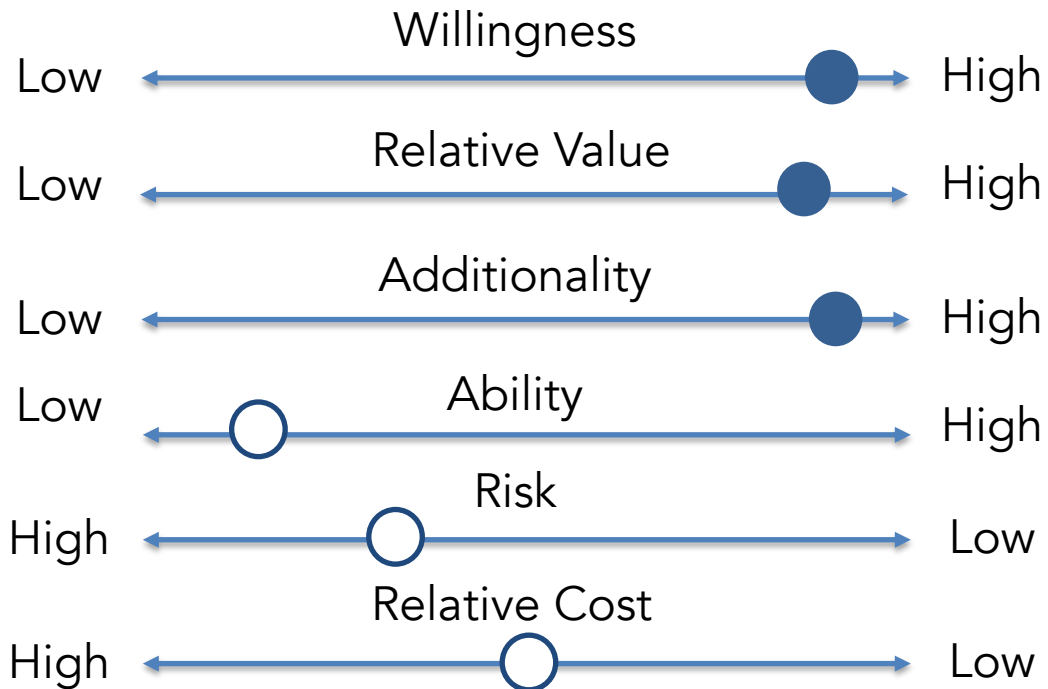
Legend

-  Javari Valley (Brazil)
-  Javari territories (Peru)
-  Amazonia
-  Country Borders

Javari Valley
Indigenous Land (Brazil)



Potential Impact of Javari Valley Partnership



The Indigenous Peoples of the Javari Valley have high **willingness** to protect their territory, and strong commitment to enhance their and the National Indian Foundation's (FUNAI) guardianship **ability**. Their territory has some of the highest carbon and biodiversity **values** on Earth. **Risks** are medium as the territory is legally protected. However, FUNAI has limited resources and is being dismantled by the Bolsonaro Government. This reduces the protection of the territory. FUNAI staff and Indigenous leaders are also subject to threats and attacks. **Costs** per year are medium for an area of its size (~\$1 million / year, plus policy, defenders and communications costs). Our **additionality** is supporting UNIVAJA, the organization representing Indigenous Peoples, to take a larger role in protecting their territory, while pressuring FUNAI to address mining and fishing threats and invasions.

What is our work in this territory:

- Increase ability: Strengthen guardianship ability of UNIVAJA and provide equipment to FUNAI to protect territory
- Mitigate risk: Increase legal pressure to FUNAI to fulfill its responsibilities, provide safety and security support to UNIVAJA, support policy efforts at a national level to maintain rights of Indigenous Peoples to remain isolated
- Relative costs: Engage with other funders to support the work in the Javari Valley

● Pre-conditions to Nia Tero's engagement

○ Factors susceptible to change

Tracking Tool – Javari Territory, Brazil

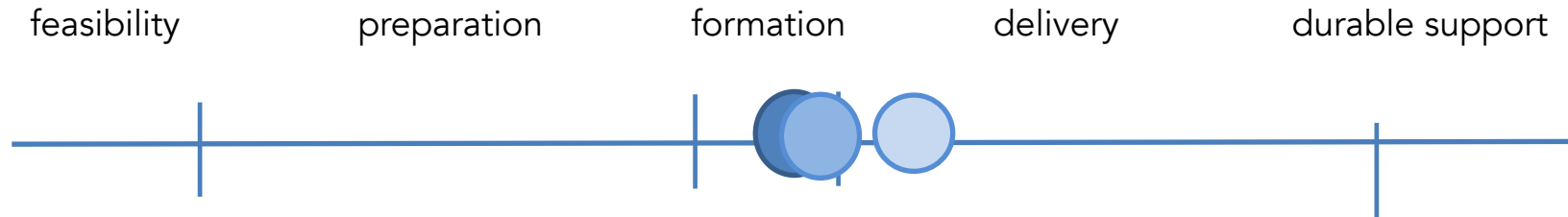
May 2020



Nov 2020



Oct 2021



Completion Stage

feasibility

- ✓ Size and population
- ✓ Bio-cultural characteristics
- ✓ Governance
- ✓ Opportunities & risks
- ✓ Readiness to partner
- ✓ Assessment of potential impact

preparation

- ✓ Collective plan available
- ✓ Communities aligned around plan
- ✓ Clear on commitment to territory (and culture)
- ✓ Prioritization by IP

formation

- ✓ All involved have clear responsibilities
- ✓ Everyone endorses them

delivery

- ✓ Both sides do what they said they are going to do
- They iterate when needed and do it again
- Monitoring in place

durable support

- Clear implementation actions defined (based on plan)
- ✓ Policy in place to secure rights to place
- Financing in place
- Governance and ability to manage \$ in place

LOCAL DATA

Javari Valley, Brazil

Datasets

Indicators

Analysis

About the Platform

[Log in](#) [Sign Up](#)

Thriving Peoples i -

TBD

Thriving Places i -

Land -

Land cover

Deforestation rate (ha/year)

Deforestation alert (count/month)

Fire (count/month)

Forest degradation rate (ha/year)

Forest carbon density (MgC/ha)

Secondary vegetation (ha/year)

Land incursion (total count)

Water +

Wildlife +

Land cover

Layers

MapBiomias

2018

All

Forest

Pasture

Agriculture

Non-vegetated Area

Non Forest Natural Formation

Water

Stats

% Landcover in 2018

Expand ↗

Annual

